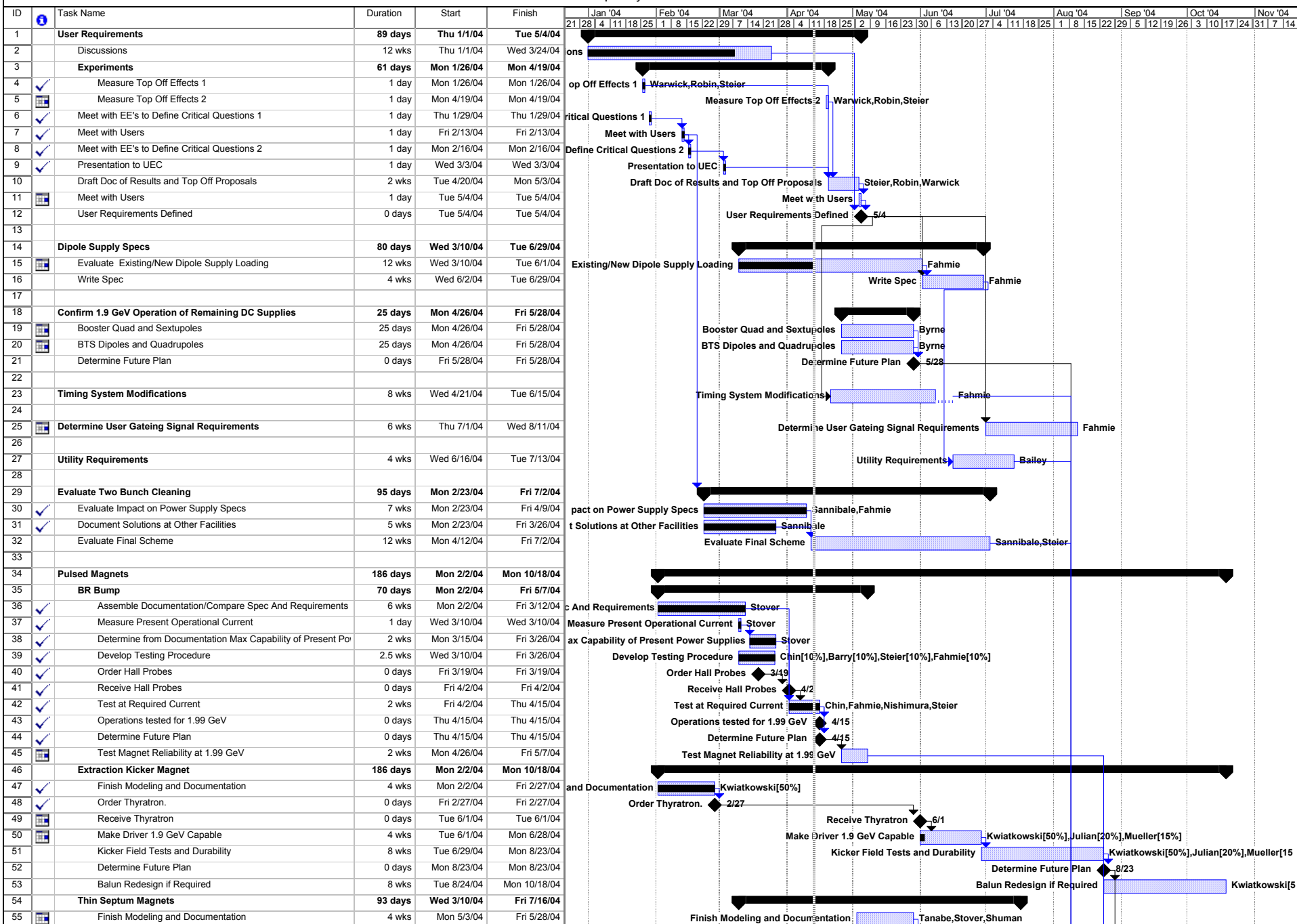


Top off yr 1 v4-9-04



Top off yr 1 v4-9-04

| ID | Task Name | Duration | Start | Finish | Gantt Chart | | | | | | | | | | | |
|-----|---|-----------------|--------------------|--------------------|--|---------|---------|---------|---------|---------|---------|---------|---------|---------|---------|--|
| | | | | | Jan '04 | Feb '04 | Mar '04 | Apr '04 | May '04 | Jun '04 | Jul '04 | Aug '04 | Sep '04 | Oct '04 | Nov '04 | |
| 56 | Measure Present Operational Current | 1 day | Wed 3/10/04 | Wed 3/10/04 | Measure Present Operational Current Stover | | | | | | | | | | | |
| 57 | Determine from Documentation Max Capability of Present Power Supplies | 1 wk | Mon 4/12/04 | Fri 4/16/04 | Determine from Documentation Max Capability of Present Power Supplies Stover | | | | | | | | | | | |
| 58 | Test Max Current | 5 days | Mon 5/31/04 | Fri 6/4/04 | Test Max Current Stover | | | | | | | | | | | |
| 59 | Determine Feasibility of Measuring Field of Septum | 1 wk | Mon 3/22/04 | Fri 3/26/04 | Determine Feasibility of Measuring Field of Septum Steier, Robin, Mech Techs, Stover | | | | | | | | | | | |
| 60 | Cost and Fab Plan for Bench Model | 4 wks | Mon 3/29/04 | Fri 4/23/04 | Cost and Fab Plan for Bench Model Stover, Tanabe, Shuman | | | | | | | | | | | |
| 61 | Fab Bench Model | 8 wks | Mon 4/26/04 | Fri 6/18/04 | Fab Bench Model Stover, Tanabe, Shuman | | | | | | | | | | | |
| 62 | 1.9 GeV Testing | 20 days | Mon 6/21/04 | Fri 7/16/04 | 1.9 GeV Testing Tanabe, Shuman, Stover | | | | | | | | | | | |
| 63 | Determine Future Plan | 0 days | Fri 7/16/04 | Fri 7/16/04 | Determine Future Plan 7/16 | | | | | | | | | | | |
| 64 | Thick Septum Magnets | 149 days | Mon 2/2/04 | Thu 8/26/04 | Modeling and Analysis Tanabe, Shuman, Stover | | | | | | | | | | | |
| 65 | Modeling and Analysis | 18 wks | Mon 2/2/04 | Fri 6/4/04 | Modeling and Analysis Tanabe, Shuman, Stover | | | | | | | | | | | |
| 66 | Measure Present Operational Current | 1 day | Wed 3/10/04 | Wed 3/10/04 | Measure Present Operational Current Stover | | | | | | | | | | | |
| 67 | Determine from Documentation Max Capability of Present Power Supplies | 5 wks | Mon 3/15/04 | Fri 4/16/04 | Determine from Documentation Max Capability of Present Power Supplies Stover | | | | | | | | | | | |
| 68 | Determine Feasibility of Measuring Field of Septum | 3 wks | Fri 3/12/04 | Thu 4/1/04 | Determine Feasibility of Measuring Field of Septum Steier, Robin, Mech Techs, Stover | | | | | | | | | | | |
| 69 | Cost and Fab Plan for Bench Model | 4 wks | Fri 4/2/04 | Thu 4/29/04 | Cost and Fab Plan for Bench Model Stover, Tanabe, Shuman | | | | | | | | | | | |
| 70 | Fab Bench Model | 8 wks | Fri 4/30/04 | Thu 6/24/04 | Fab Bench Model Stover, Tanabe, Shuman | | | | | | | | | | | |
| 71 | Measurement of Bench Magnet and Prototype Driver | 25 days | Fri 6/25/04 | Thu 7/29/04 | Measurement of Bench Magnet and Prototype Driver Tanabe, Shuman, Stover | | | | | | | | | | | |
| 72 | Determine Feasibility of Full Sine Wave Excitation | 4 wks | Mon 3/15/04 | Fri 4/9/04 | Determine Feasibility of Full Sine Wave Excitation Stover, Fahmie | | | | | | | | | | | |
| 73 | Final Analysis | 4 wks | Fri 7/30/04 | Thu 8/26/04 | Final Analysis Tanabe, Shuman, Stover | | | | | | | | | | | |
| 74 | Determine Future Plan | 0 days | Thu 8/26/04 | Thu 8/26/04 | Determine Future Plan 8/26 | | | | | | | | | | | |
| 75 | SR Bump Magnets | 75 days | Mon 3/22/04 | Fri 7/2/04 | Evaluate Septum Move Mech Techs, Steier, Robin | | | | | | | | | | | |
| 76 | Evaluate Septum Move | 2 wks | Mon 3/22/04 | Fri 4/2/04 | Evaluate Septum Move Mech Techs, Steier, Robin | | | | | | | | | | | |
| 77 | Evaluate Motion Range of Bird Cage Flex Bands | 2 wks | Mon 4/5/04 | Fri 4/16/04 | Evaluate Motion Range of Bird Cage Flex Bands Thur | | | | | | | | | | | |
| 78 | Move Injection Assy and Test with Beam | 3 wks | Mon 5/24/04 | Fri 6/11/04 | Move Injection Assy and Test with Beam Steier, Robin, Thur, Gavidia, Mech Techs | | | | | | | | | | | |
| 79 | Evaluate Compensation Coil on Vertical Kick | 4 wks | Mon 6/7/04 | Thu 7/2/04 | Evaluate Compensation Coil on Vertical Kick Stover | | | | | | | | | | | |
| 80 | Decide Whether Upgrade of Bump Magnets are Needed | 0 days | Fri 7/2/04 | Fri 7/2/04 | Decide Whether Upgrade of Bump Magnets are Needed 7/2 | | | | | | | | | | | |
| 81 | Decide Whether Upgrades of Power Supplies are Needed | 0 days | Fri 7/2/04 | Fri 7/2/04 | Decide Whether Upgrades of Power Supplies are Needed 7/2 | | | | | | | | | | | |
| 82 | | | | | | | | | | | | | | | | |
| 83 | Pulsed Magnets Complete | 0 days | Thu 8/26/04 | Thu 8/26/04 | Pulsed Magnets Complete 8/26 | | | | | | | | | | | |
| 84 | | | | | | | | | | | | | | | | |
| 85 | Radiation Safety | 157 days | Thu 1/1/04 | Fri 8/6/04 | Survey of Solutions Elsewhere Steier, Robin, Donahue | | | | | | | | | | | |
| 86 | Survey of Solutions Elsewhere | 2 wks | Thu 1/1/04 | Wed 1/14/04 | Survey of Solutions Elsewhere Steier, Robin, Donahue | | | | | | | | | | | |
| 87 | Document Findings | 3 wks | Mon 4/12/04 | Fri 4/30/04 | Document Findings Steier, Robin, Donahue | | | | | | | | | | | |
| 88 | Insure Electrons Can't Go Down Beamline | 140 days | Mon 1/26/04 | Fri 8/6/04 | Determine Geometry of Vac Chamber Nishimura | | | | | | | | | | | |
| 89 | Determine Geometry of Vac Chamber | 1 day | Fri 1/30/04 | Fri 1/30/04 | Determine Geometry of Vac Chamber Nishimura | | | | | | | | | | | |
| 90 | Tracking Studies with Simple Model | 3 wks | Mon 3/1/04 | Fri 3/19/04 | Tracking Studies with Simple Model Nishimura | | | | | | | | | | | |
| 91 | Acquire More Realistic Magnetic Model | 2 wks | Mon 3/15/04 | Fri 3/26/04 | Acquire More Realistic Magnetic Model Magnetic Group, Jung | | | | | | | | | | | |
| 92 | Tracking Studies with Advanced Model | 4 wks | Mon 3/29/04 | Fri 4/23/04 | Tracking Studies with Advanced Model Nishimura | | | | | | | | | | | |
| 93 | Determine Redundant Current Monitoring Scheme | 105 days | Mon 2/2/04 | Fri 6/25/04 | Conceptual Outline Barry, Chin | | | | | | | | | | | |
| 94 | Initial Conceptual Outline | 2 wks | Mon 2/2/04 | Fri 2/13/04 | Initial Conceptual Outline Barry, Chin | | | | | | | | | | | |
| 95 | Review Drawings | 2 wks | Mon 2/16/04 | Fri 2/27/04 | Review Drawings Barry, Chin | | | | | | | | | | | |
| 96 | Hardware Mods/Installation for Testing | 3 wks | Mon 3/29/04 | Fri 4/16/04 | Hardware Mods/Installation for Testing Barry, Chin | | | | | | | | | | | |
| 97 | Testing | 6 wks | Mon 4/19/04 | Fri 5/28/04 | Testing Barry, Chin | | | | | | | | | | | |
| 98 | Determine Final Interlock Layout | 4 wks | Mon 5/31/04 | Fri 6/25/04 | Determine Final Interlock Layout Barry, Chin, Mueller, Steier | | | | | | | | | | | |
| 99 | Insure Bremstrahlung is Small | 140 days | Mon 1/26/04 | Fri 8/6/04 | Evaluate Radiation Monitors Mueller, Donahue | | | | | | | | | | | |
| 100 | Evaluate Radiation Monitors | 13 wks | Mon 1/26/04 | Fri 4/23/04 | Evaluate Radiation Monitors Mueller, Donahue | | | | | | | | | | | |
| 101 | Determine Thresholds | 1 wk | Mon 4/19/04 | Fri 4/23/04 | Determine Thresholds Donahue | | | | | | | | | | | |
| 102 | Determine RSS Logic | 8 wks | Mon 3/1/04 | Fri 4/23/04 | Determine RSS Logic Mueller, Byrne, Robin | | | | | | | | | | | |
| 103 | Define Interlock Scheme | 4 wks | Mon 4/26/04 | Fri 5/21/04 | Define Interlock Scheme Mueller | | | | | | | | | | | |
| 104 | Administrative Procedure for Injection Test with Shutters | 12 wks | Mon 2/16/04 | Fri 5/7/04 | Administrative Procedure for Injection Test with Shutters Open Robin, Donahue, Feinberg | | | | | | | | | | | |
| 105 | Review of Procedure | 0.33 wks | Mon 5/10/04 | Tue 5/11/04 | Review of Procedure Donahue, Feinberg, Robin | | | | | | | | | | | |
| 106 | Experiments with Missteering at 1.5 GeV with Shutters Open | 8 wks | Mon 6/14/04 | Fri 8/6/04 | Experiments with Missteering at 1.5 GeV with Shutters Open Donahue, Steier, Robin, Mueller | | | | | | | | | | | |
| 107 | Define Injection Monitoring Efficiency Scheme | 8 wks | Mon 3/22/04 | Fri 5/14/04 | Define Injection Monitoring Efficiency Scheme Nishimura, Sannibale, Steier, Byrne, Chin | | | | | | | | | | | |
| 108 | Optimize Injector | 12 wks | Mon 4/19/04 | Fri 7/9/04 | Optimize Injector Byrne, Sannibale, Nishimura | | | | | | | | | | | |
| 109 | Maximize Injection Efficiency | 4 wks | Mon 7/12/04 | Fri 8/6/04 | Maximize Injection Efficiency Steier, Robin, Sannibale | | | | | | | | | | | |
| 110 | Understand Loss Mechanism When RF is Turned Off | 6 wks | Mon 1/26/04 | Fri 3/5/04 | Understand Loss Mechanism When RF is Turned Off Steier, Nishimura | | | | | | | | | | | |

Top off yr 1 v4-9-04

| ID | Task Name | Duration | Start | Finish | Gantt Chart | | | | | | | | | | | | | | | | | | | | | | | | | | | |
|-----|--|----------|-------------|--------------|--|---------|---------|---------|---------|---------|---------|---------|---------|---------|---------|--|--|--|--|--|--|--|--|--|--|--|--|--|--|--|--|--|
| | | | | | Jan '04 | Feb '04 | Mar '04 | Apr '04 | May '04 | Jun '04 | Jul '04 | Aug '04 | Sep '04 | Oct '04 | Nov '04 | | | | | | | | | | | | | | | | | |
| 111 | Measure Effect of Scraper In SR3 When Beam is Dumped | 8 wks | Mon 1/26/04 | Fri 3/19/04 | Beam is Dumped [Bar from Jan 26 to Feb 9] | | | | | | | | | | | | | | | | | | | | | | | | | | | |
| 112 | Determine New Scraper Location and Design | 16 wks | Mon 3/22/04 | Fri 7/9/04 | Determine New Scraper Location and Design [Bar from Mar 22 to Jul 9] | | | | | | | | | | | | | | | | | | | | | | | | | | | |
| 113 | Define Short and Long Term Collimator Scheme | 0 days | Fri 7/9/04 | Fri 7/9/04 | Define Short and Long Term Collimator Scheme [Point at Jul 9] | | | | | | | | | | | | | | | | | | | | | | | | | | | |
| 114 | Localize Beam Loss | 0 days | Fri 7/9/04 | Fri 7/9/04 | Localize Beam Loss [Point at Jul 9] | | | | | | | | | | | | | | | | | | | | | | | | | | | |
| 115 | Radiation Safety Complete | 0 days | Fri 8/6/04 | Fri 8/6/04 | Radiation Safety Complete [Point at Aug 6] | | | | | | | | | | | | | | | | | | | | | | | | | | | |
| 116 | | | | | | | | | | | | | | | | | | | | | | | | | | | | | | | | |
| 117 | Scope Definition | 4 wks | Mon 8/9/04 | Fri 9/3/04 | Scope Definition [Bar from Aug 9 to Sep 3] | | | | | | | | | | | | | | | | | | | | | | | | | | | |
| 118 | | | | | | | | | | | | | | | | | | | | | | | | | | | | | | | | |
| 119 | Cost Estimate | 8 wks | Mon 9/6/04 | Fri 10/29/04 | Cost Estimate [Bar from Sep 6 to Oct 29] | | | | | | | | | | | | | | | | | | | | | | | | | | | |
| 120 | | | | | | | | | | | | | | | | | | | | | | | | | | | | | | | | |
| 121 | Schedule | 8 wks | Mon 9/6/04 | Fri 10/29/04 | Schedule [Bar from Sep 6 to Oct 29] | | | | | | | | | | | | | | | | | | | | | | | | | | | |
| 122 | | | | | | | | | | | | | | | | | | | | | | | | | | | | | | | | |
| 123 | CDR | 12 wks | Mon 8/23/04 | Fri 11/12/04 | CDR [Bar from Aug 23 to Nov 12] | | | | | | | | | | | | | | | | | | | | | | | | | | | |