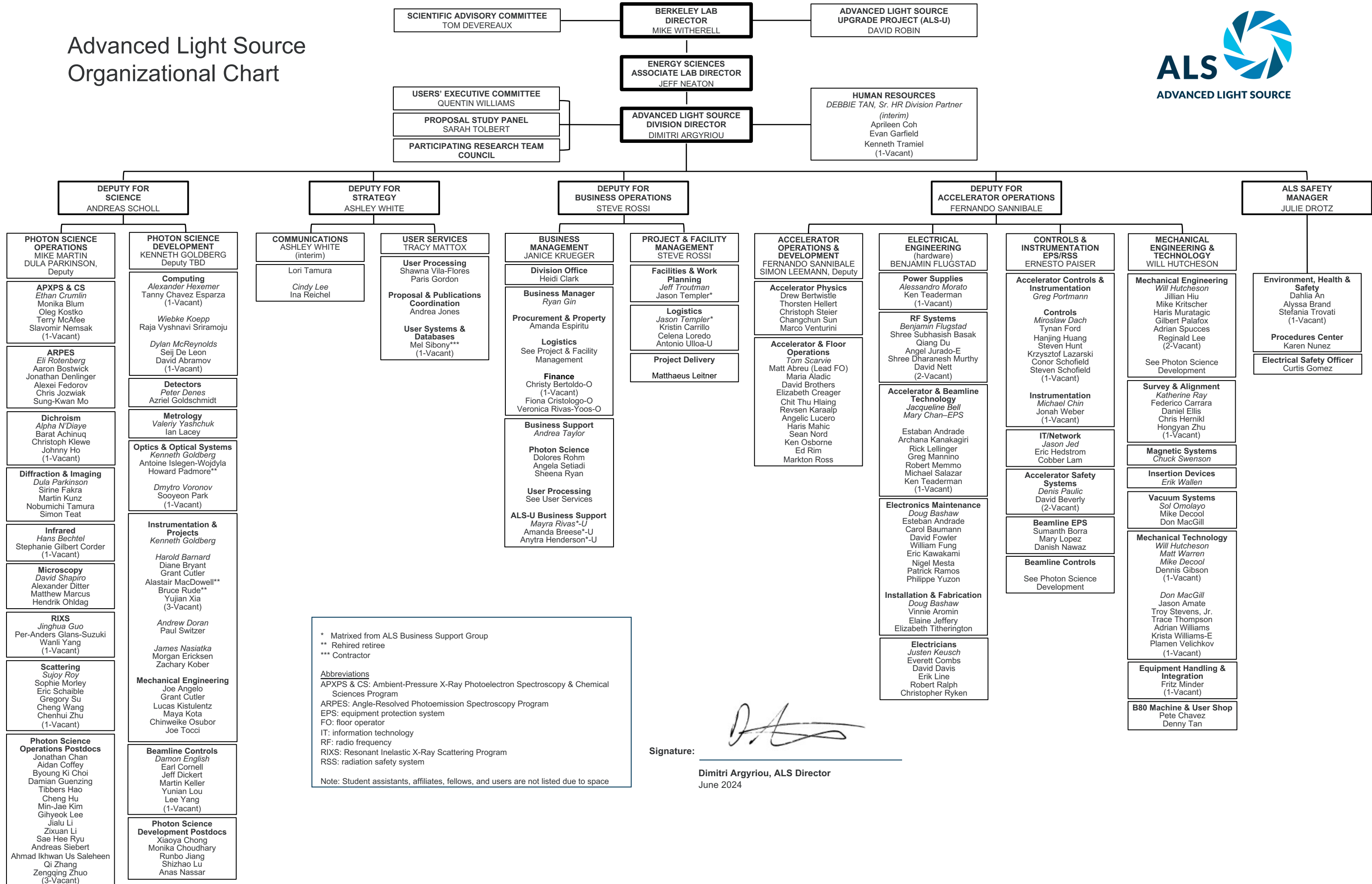


# Advanced Light Source Organizational Chart



\* Matrixed from ALS Business Support Group  
 \*\* Rehired retiree  
 \*\*\* Contractor

**Abbreviations**  
 APXPS & CS: Ambient-Pressure X-Ray Photoelectron Spectroscopy & Chemical Sciences Program  
 ARPES: Angle-Resolved Photoemission Spectroscopy Program  
 EPS: equipment protection system  
 FO: floor operator  
 IT: information technology  
 RF: radio frequency  
 RIXS: Resonant Inelastic X-Ray Scattering Program  
 RSS: radiation safety system

Note: Student assistants, affiliates, fellows, and users are not listed due to space

Signature:   
 Dimitri Argyriou, ALS Director  
 June 2024