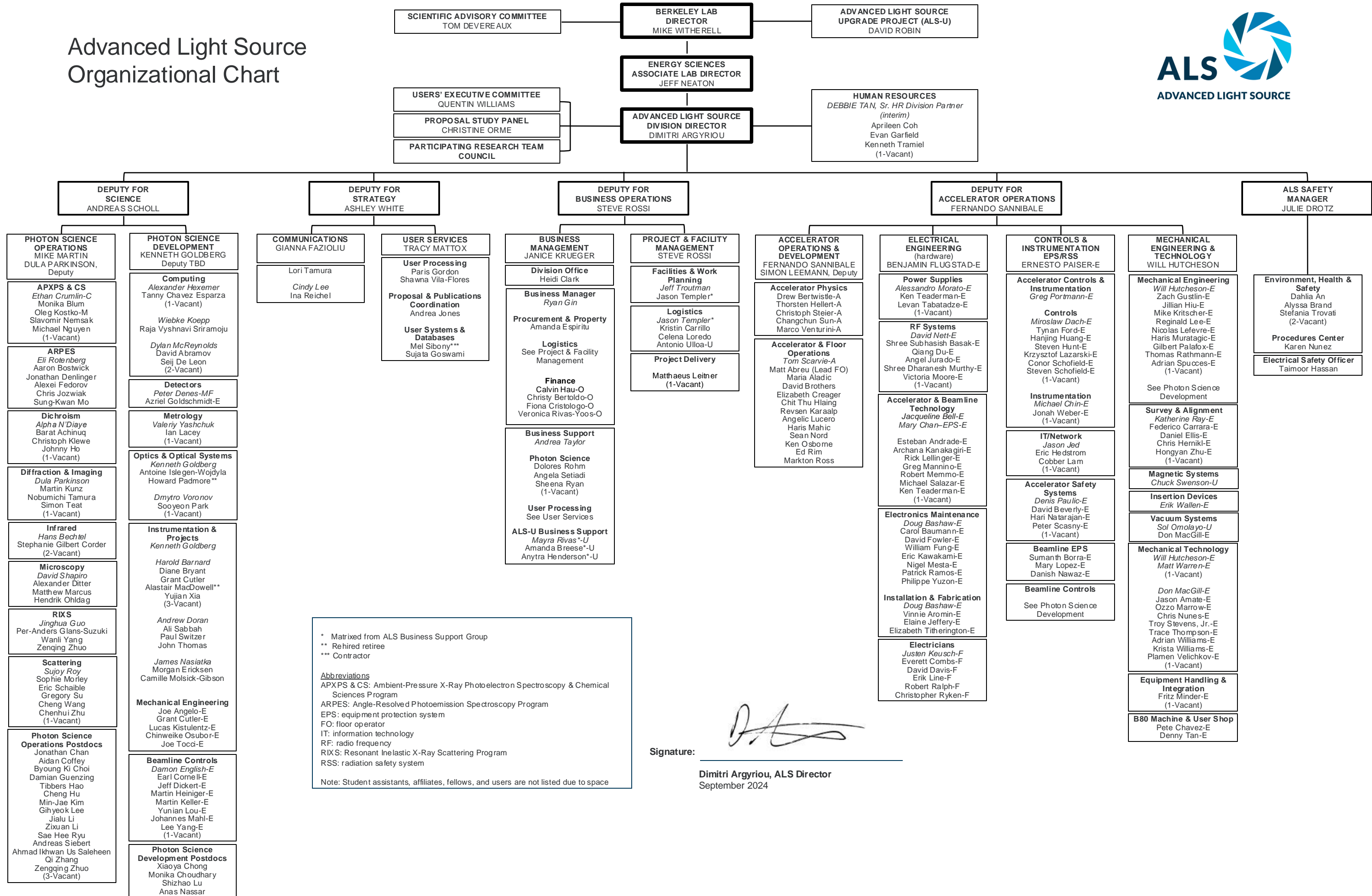



Advanced Light Source Organizational Chart



* Matrixed from ALS Business Support Group
 ** Rehired retiree
 *** Contractor

Abbreviations
 APXPS & CS: Ambient-Pressure X-Ray Photoelectron Spectroscopy & Chemical Sciences Program
 ARPES: Angle-Resolved Photoemission Spectroscopy Program
 EPS: equipment protection system
 FO: floor operator
 IT: information technology
 RF: radio frequency
 RIXS: Resonant Inelastic X-Ray Scattering Program
 RSS: radiation safety system

Note: Student assistants, affiliates, fellows, and users are not listed due to space

Signature: 
 Dimitri Argyriou, ALS Director
 September 2024