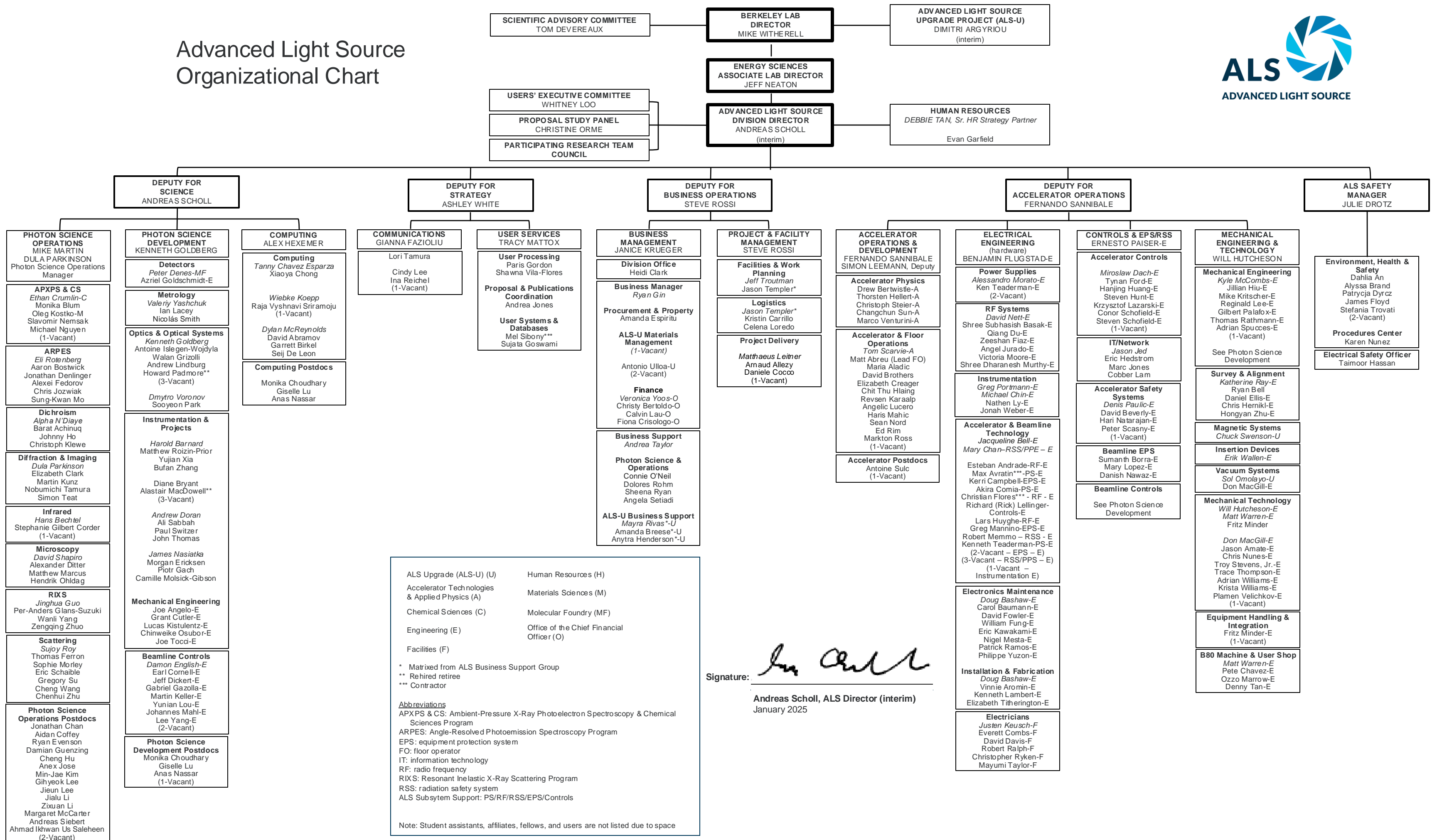


# Advanced Light Source Organizational Chart



ALS Upgrade (ALS-U) (U)      Human Resources (H)

Accelerator Technologies & Applied Physics (A)      Materials Sciences (M)

Chemical Sciences (C)      Molecular Foundry (MF)


Engineering (E)      Office of the Chief Financial Officer (O)

Facilities (F)

\* Matrixed from ALS Business Support Group  
 \*\* Rehired retiree  
 \*\*\* Contractor

**Abbreviations**  
 APXPS & CS: Ambient-Pressure X-Ray Photoelectron Spectroscopy & Chemical Sciences Program  
 ARPES: Angle-Resolved Photoemission Spectroscopy Program  
 EPS: equipment protection system  
 FO: floor operator  
 IT: information technology  
 RF: radio frequency  
 RIXS: Resonant Inelastic X-Ray Scattering Program  
 RSS: radiation safety system  
 ALS Subsystem Support: PS/RF/RSS/EPS/Controls

Note: Student assistants, affiliates, fellows, and users are not listed due to space

Signature:   
 Andreas Scholl, ALS Director (interim)  
 January 2025