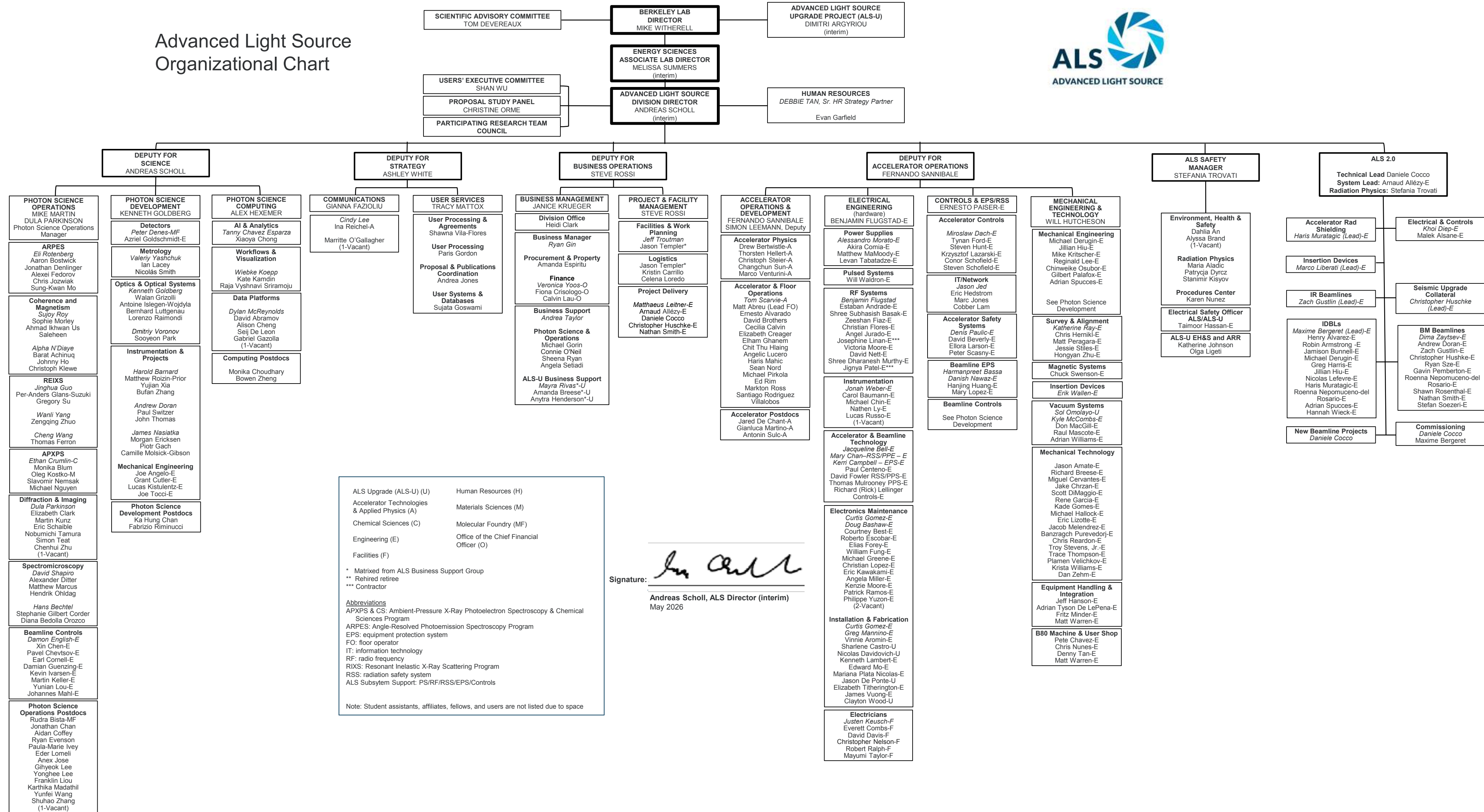


Advanced Light Source Organizational Chart



ALS Upgrade (ALS-U) (U) Human Resources (H)

Accelerator Technologies & Applied Physics (A) Materials Sciences (M)

Chemical Sciences (C) Molecular Foundry (MF)

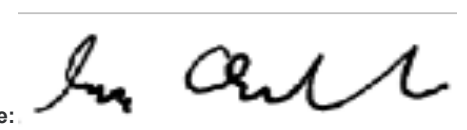
Engineering (E) Office of the Chief Financial Officer (O)

Facilities (F)

* Matrixed from ALS Business Support Group
** Rehired retiree
*** Contractor

Abbreviations
APXPS & CS: Ambient-Pressure X-Ray Photoelectron Spectroscopy & Chemical Sciences Program
ARPEs: Angle-Resolved Photoemission Spectroscopy Program
EPS: equipment protection system
FO: floor operator
IT: information technology
RF: radio frequency
RIXS: Resonant Inelastic X-Ray Scattering Program
RSS: radiation safety system
ALS Subsystem Support: PS/RF/RSS/PPS/Controls

Note: Student assistants, affiliates, fellows, and users are not listed due to space

Signature: 

Andreas Scholl, ALS Director (interim)
May 2026